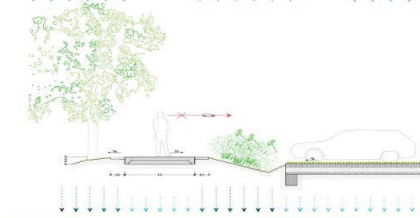
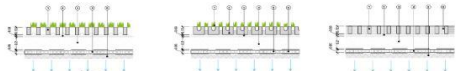
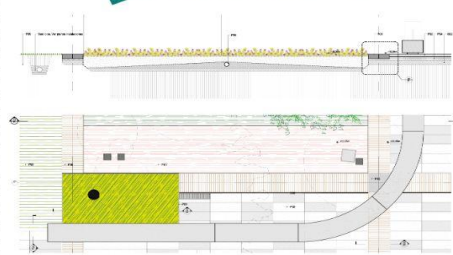
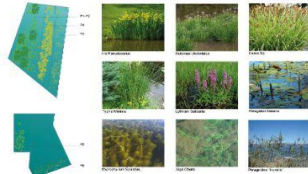


1- ACCESS URBANIZATION AND NEW PARKING

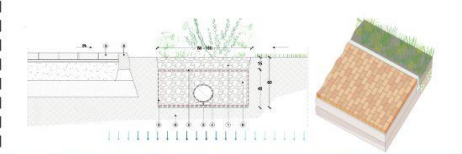
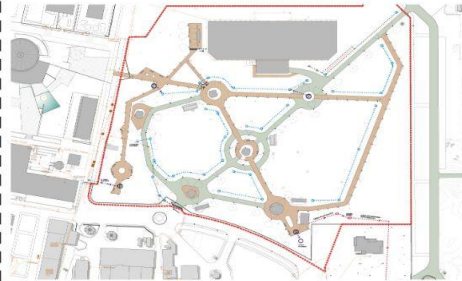


PARC DE LES AIGÜES Cornella Llobregat, BARCELONA, Spain
The value of the place, the landscape and the water

2- THE PLAZA OF THE MUSEUM



3- LANDSCAPE RESTORATION OF THE GARDENS



CREAM estudio (Angel Cerezo Cerezo + Elisa Battilani)



HABITAT AND ECOLOGY

The 'Parque de las Aigües' is an 11-hectare site close to and linked to the Llobregat river, an ecological corridor of great value to the ecosystem. Under the surface there is the aquifer, a reserve of water 30 m deep that serves part of the need of Barcelona.



THE PLACE

A place is not just any generic place. The designer who transforms a place may or may not understand it, or may or may not even care to understand it. If he/she is not interested, he/she often invades the space with the forms of his own fantasy, in an arrogant and hurtful design act. We do not want or aspire to this, but to the contrary: we do a reading of the place. This type of more sensitive designer tries to have an attitude, but above all to read and hear to the place.



CIRCULAR AND SUSTAINABLE

The objective is to highlight the value and virtues of the place and the existing landscape together with the recovery of the ecosystem in a sustainable way. The open space is used to capture and collect water, urban elements to produce energy and gardens to improve the ecosystem and have a resilient landscape. The office designed different strategies used to capture and reuse the water in the place itself, from solutions based on nature NBS, these strategy allows to maximize the permeability of the soil, the infiltration and the retention of rainwater in the place and achieve a closed, circular cycle, **sustainable** and free of residues.



PARC DE LES AIGÜES

The value of the place the landscape and the water

CREAM estudio (Ángel Cerezo Cerezo + Elina Battilani)
Cornelà Llobregat, BARCELONA, Spain
WWW.CREAMESTUDIO.COM

SOLUTIONS USED SUDS AND NBS

Different solutions were designed in function of the phase, nature and place to develop and construct:

PERMEABLE PAVING (Pavimentos permeables)

INFILTRATION TRENCHES (Pozos y zanjas de infiltración)

FILTER DRAINS (Drenajes filtrantes)

SWALE (Cunetas verdes)

RAIN GARDENS (Jardines de lluvia)

