

# Co-creation as governance for embedding nature-based solutions in cities

**Working together  
Learning together  
Advancing together**

**Alice Reil**

ICLEI – Local Governments for Sustainability  
European Secretariat

18 May 2018 | NBS Conference | A Coruna, Spain

# Co-creation or “co-creation”?



What do we mean exactly by co-creation?

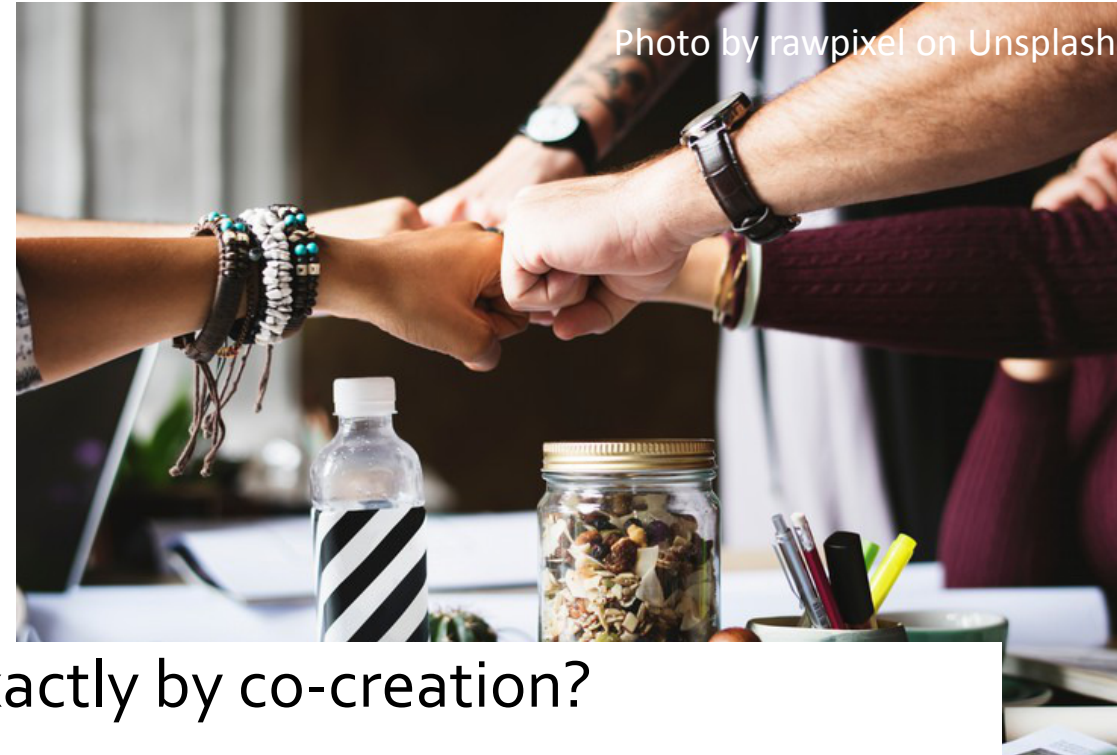
# Co-creation or “co-creation”?



What do we mean exactly by co-creation?

What do we want to achieve?

# Co-creation or “co-creation”?

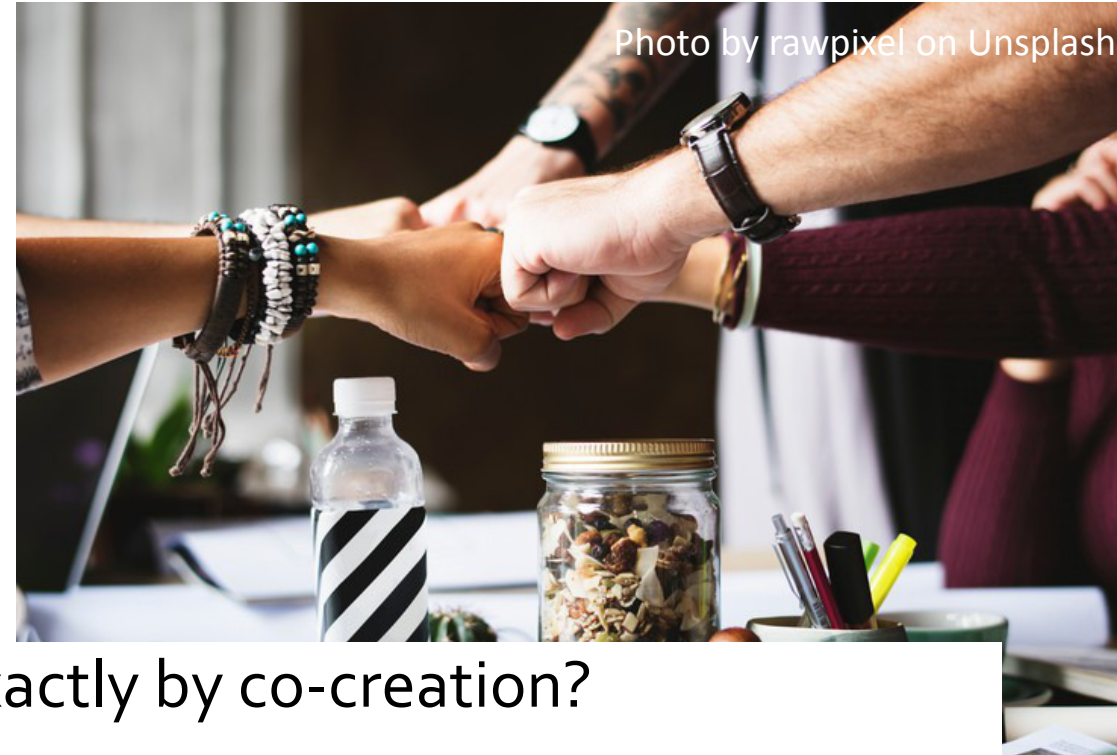


What do we mean exactly by co-creation?

What do we want to achieve?

With whom do we want to co-create?

# Co-creation or “co-creation”?



What do we mean exactly by co-creation?

What do we want to achieve?

With whom do we want to co-create?

What is the time-span?

# Co-creation or “co-creation”?



What do we mean exactly by co-creation?

What do we want to achieve?

With whom do we want to co-create?

What is the time-span?

What is possible within our (time) budgets?

# What should we as RESEARCHERS keep in mind?



Develop  
(research)  
agenda  
together

Budget time  
of cities

Build  
capacity of  
partners

Return  
acquired  
knowledge  
soon

Photo by rawpixel on Unsplash

# What should we as CITY PLANNERS keep in mind?

Get political  
backing

Find  
committed  
colleagues


Make use of  
opportunities

Photo by rawpixel on Unsplash






# What should BOTH strive for?

A woman with long dark hair and glasses, wearing a white long-sleeved shirt, is standing in a library. She is looking at a book on a shelf and has her hand raised towards it.

Put expectations on the table

A top-down view of a person's hands holding a white coffee cup with a red lid. Below the hands is a large map of Europe spread out on a wooden table. A laptop is partially visible on the left side of the map. Another person's hands are visible at the bottom right, holding a pen over a document.

Employ a skilled facilitator

Keep the curiosity alive

Set up clear process with agreed rules

# Input for co-creation of NBS

## GREEN SURGE Handbook on Urban Green Infrastructure

Policy recommendations on:

#0 Planning urban green

#1 Valuing urban green (non-monetary/monetary)

#2 Implementing urban green with the urban community

#3 Dynamics between urban green and human use

+ Fact sheets with lots of examples

Brochure on better city-research collaboration

[www.greensurge.eu](http://www.greensurge.eu)

**GREEN SURGE**

**JOINING FORCES WITH ACTIVE CITIZENS TO MANAGE INCLUSIVE, BIODIVERSE URBAN GREEN INFRASTRUCTURE** Policy Brief September 2017 **2**

With the majority of the European population living in urban areas, urban green infrastructure (UGI) is more under pressure, yet has also become more important to urban dwellers. This sense of urgency and the shift in interest towards cities' green spaces has led to a significant change in how they are planned, created and maintained. Citizens, civil society organisations (CSOs) and businesses have in recent years been pushing into the traditionally government-led field of UGI management. Decision-making on UGI has extended from predominantly public participation in government programmes to citizen-led initiatives, in which citizens, CSOs or enterprises protect and take care of common goods in cities, such as green spaces. This shift creates the need to redefine capacity, knowledge of government-led management and citizens. Three key considerations for governments to urban UGI initiatives are:

1. Use the power of non-governmental action

Almost all types of UGI are managed and owned by citizens. Beyond green spaces, their biodiversity, real estate value, and social benefits are often overlooked. This brochure builds on the experience of the GREEN SURGE project and provides recommendations for cities and universities interested in working with each other. Whilst GREEN SURGE strongly advises to involve a range of relevant other stakeholders (e.g. associations, businesses, citizens) in the city, this brochure only addresses municipal staff as well as researchers who (want to) collaborate. These recommendations serve to draw attention to those aspects that are often neglected, but that are crucial for collaboration processes to work.

**ILLUSTRATING WAYS OF GOVERNING URBAN GREEN INFRASTRUCTURE INCLUSIVELY** Fact Sheet September 2017 **2**

then offer these communities more organisational support or provide stronger incentives for them to actively contribute and share UGI needs. As local authorities and planners often have the best overview of the many UGI initiatives as well locally, they are advised to develop a social inclusion strategy so that all communities have an equal say in how urban green spaces should look like. This goes beyond looking at activities and events; planners need to take on a strategic view and start identifying whom to involve, why and how they should be involved. They may want to do this hand in hand with local groups as they are often better embedded in and trusted by vulnerable communities.

**UGI more socially**

of different types of green, over decades or relatively it is spread across the city

**WORKING TOGETHER LEARNING TOGETHER SUCCEEDING TOGETHER HOW RESEARCHERS AND MUNICIPALITIES CAN WORK BETTER HAND IN HAND**

*Do you work at a municipality and would you like to invite researchers to the table to help you create a more sustainable city? Or are you from a research institute and you are keen on working with municipalities to support your scientific work?*

Experience shows that it can be challenging for municipal officials - practitioners from city departments as well as politicians - to partner with researchers effectively. But there are ways and means to avoid the typical stumble stones.

This is the second in a series of three GREEN SURGE fact sheets that illustrate the opportunities urban green infrastructure provides for European cities. Each GREEN SURGE fact sheet is linked to a short policy brief under the same topic and provides more insight as well as examples for decision-makers. The main target audience of the fact sheets are urban planners and city officials across all departments who are curious about ways and means in which urban green infrastructure - or in this case to governance - can help to address a wide range of policy priorities and take more effective and efficient action on the road to sustainable cities.

**www.greensurge.eu**

# Thank you!



Alice Reil  
ICLEI Europe  
[alice.reil@iclei.org](mailto:alice.reil@iclei.org)

© Anton Malishev