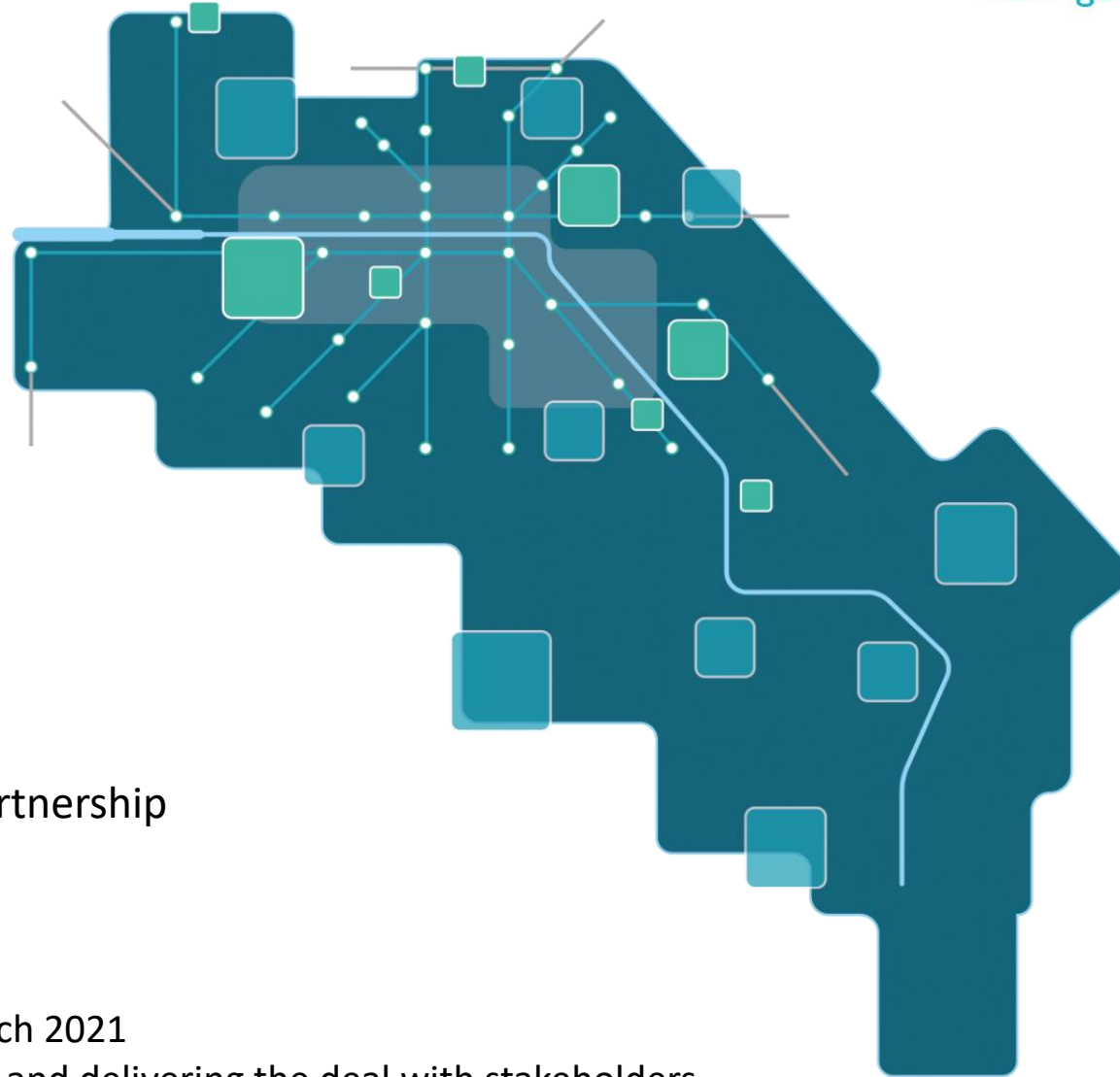


A Blueprint for the Green Network: 15 years in development



Max Hislop

Programme Manager,
Glasgow & Clyde Valley Green Network Partnership



Glasgow Innovation Summit, 23rd March 2021

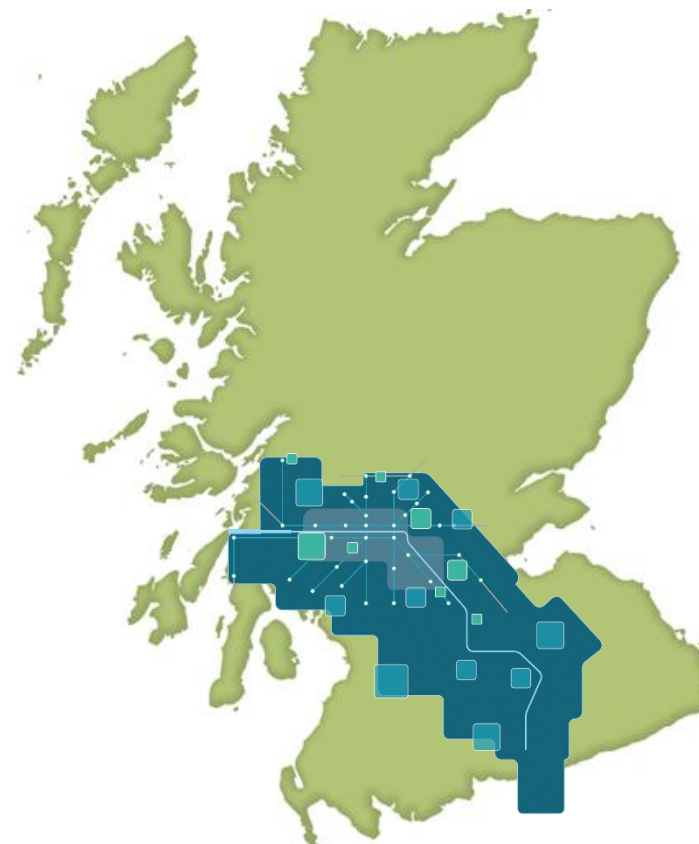
Session 1.6: Building natural networks and delivering the deal with stakeholders

The GCV Green Network Partnership

The Partnership's Remit:

- Work strategically & add value
- To develop a co-ordinated approach that will deliver a major improvement in the scale and quality of the Green Network across the region

Partnership formed: **2006**



GLASGOW AND THE CLYDE VALLEY JOINT STRUCTURE PLAN 2006

THE TWENTY YEAR DEVELOPMENT VISION

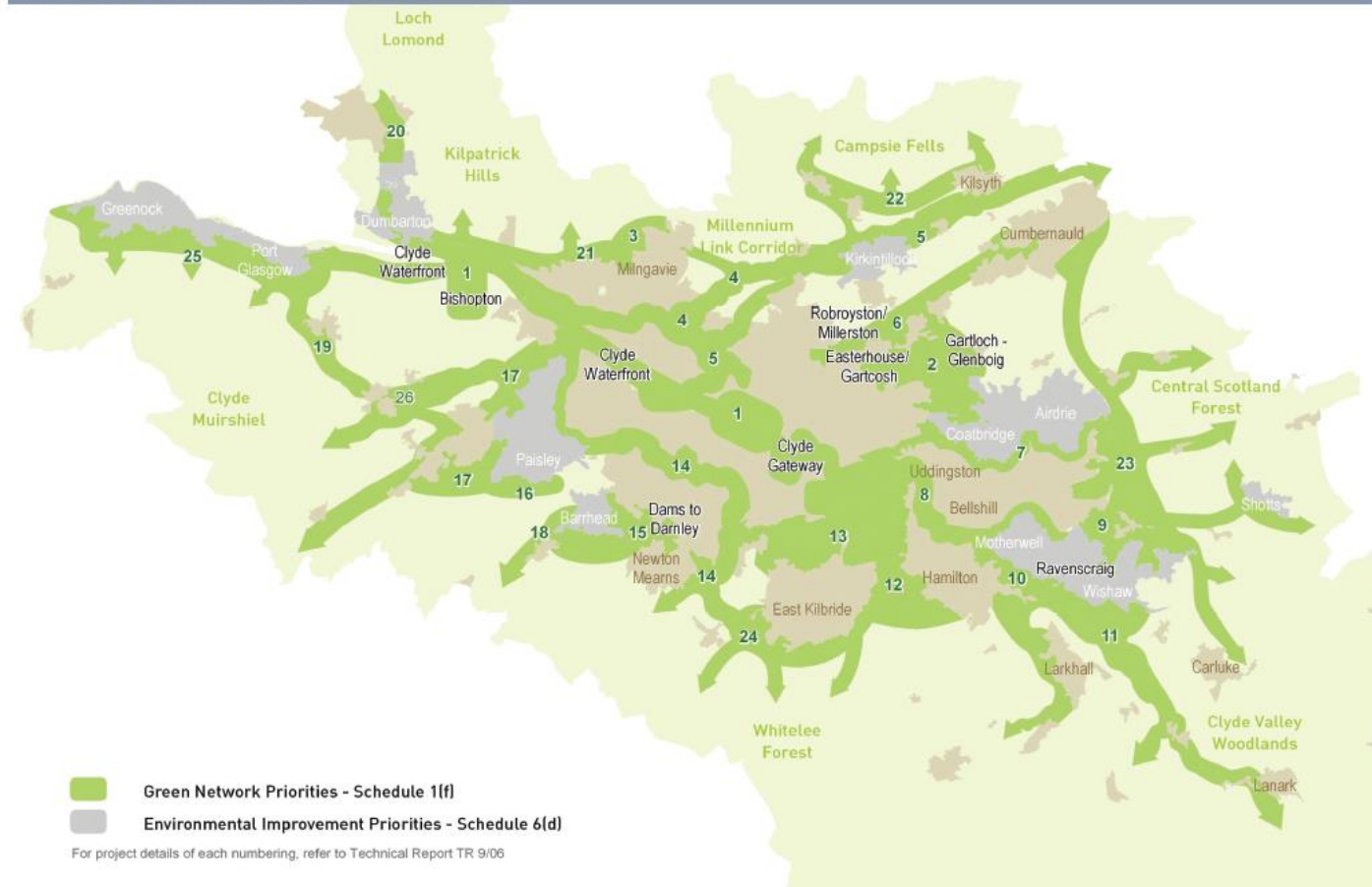
WRITTEN STATEMENT

Operative from 29 April 2008



2006

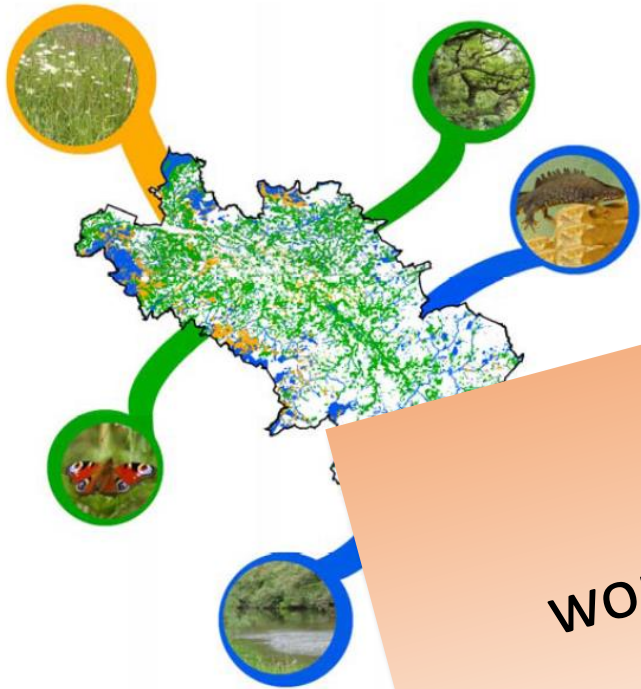
Diagram 8 Glasgow and the Clyde Valley Green Network



© Crown copyright. All rights reserved. ©CYPJC 10001510 Renfrewshire Council 100023417

2008

Glasgow and Clyde Valley Integrated Habitat Networks



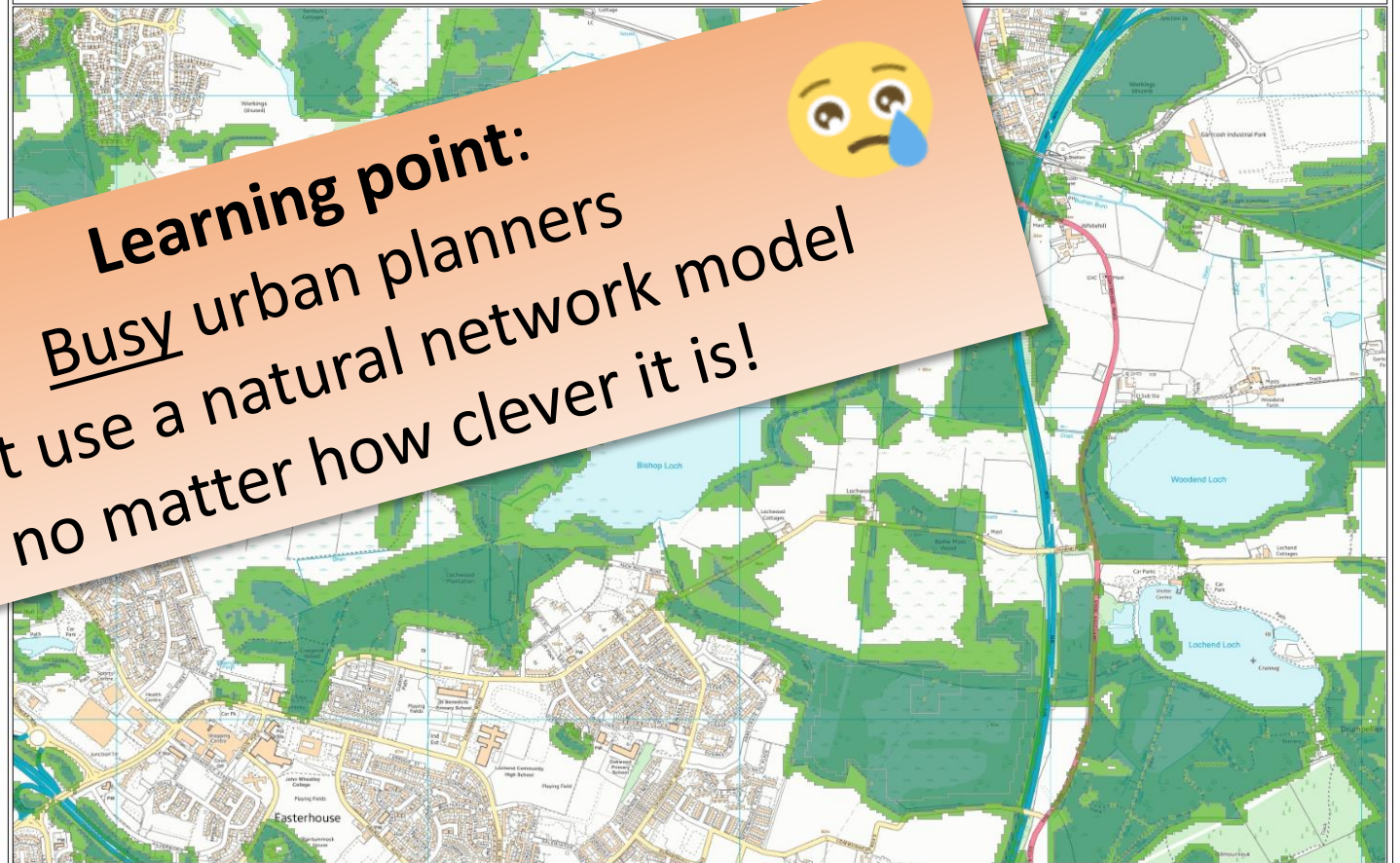
gcv green network

Forest Research

© Forestry Commission

Cover photographs provided by Scottish Wildlife Trust and Forestry Commission

Easterhouse woodland habitat networks



Learning point:
Busy urban planners
won't use a natural network model
no matter how clever it is!



This map is reproduced from Ordnance Survey material with the permission of Ordnance Survey on behalf of the Controller of Her Majesty's Stationery Office © Crown Copyright. Unauthorised reproduction infringes Crown copyright and may lead to prosecution or civil proceedings. Glasgow & The Clyde Valley Strategic Development Planning Authority 100032510 2014.



0 0.125 0.25 0.5 0.75 1 Kilometres



GN Opportunities Mapping

2010

Land use **Opportunities**

Vacant and Derelict
Land

Built Development
Areas

Underperforming
Greenspace

Delivery **Priorities**

Habitat
Connectivity

Climate Change
Adaptation

Access to
Greenspace

Health & Wellbeing

2016

Strategic Development Plan

Proposed Plan
Delivering Growth in the City Region

January 2016

Green Network Strategic Delivery Areas

Learning point:
A natural network model
embedded in a strategic plan
will be used by urban planners



Diagram 7

Green Network Strategic Delivery Areas

Glasgow and Clyde Valley Green Network

- | | |
|---------------------------------|----------------------|
| 1 Upper Greenock | 9 Renfrew |
| 2 East Greenock | 10 Yoker/Whitecrock |
| 3 Port Glasgow | 11 Glasgow West End |
| 4 Dunbarton | 12 Govan/Ibrox |
| 5 Bowling | 13 Toryglen |
| 6 Clydebank | 14 Clyde Gateway |
| 7 Erskine | 15 Gartloch/Gartcosh |
| 8 Johnstone/Black Cart Corridor | 16 Ravenscraig |

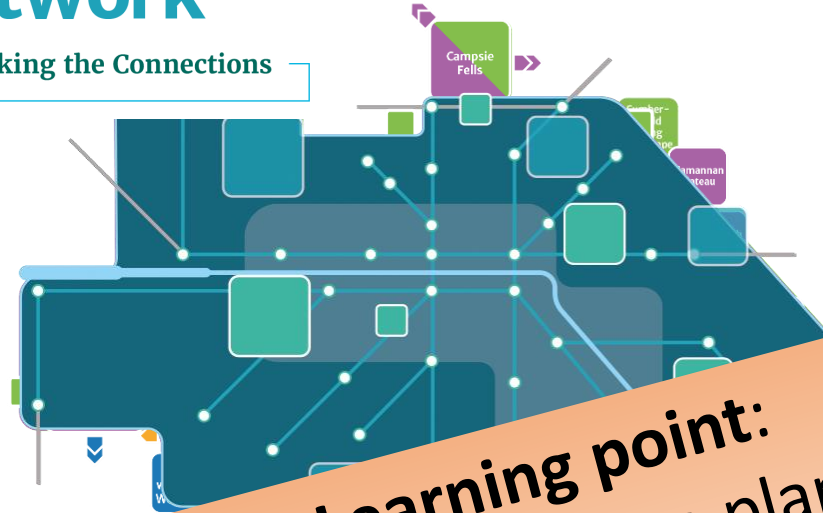
Green Network Priorities

- Health
- Access
- Climate Change
- Habitats

Green Network

The Blueprint Making the Connections

2019



Learning point:
Politicians & urban planners
love a strong graphic!
They might not understand the data



Green Network

The Blueprint Making the Connections



Habitat
Network

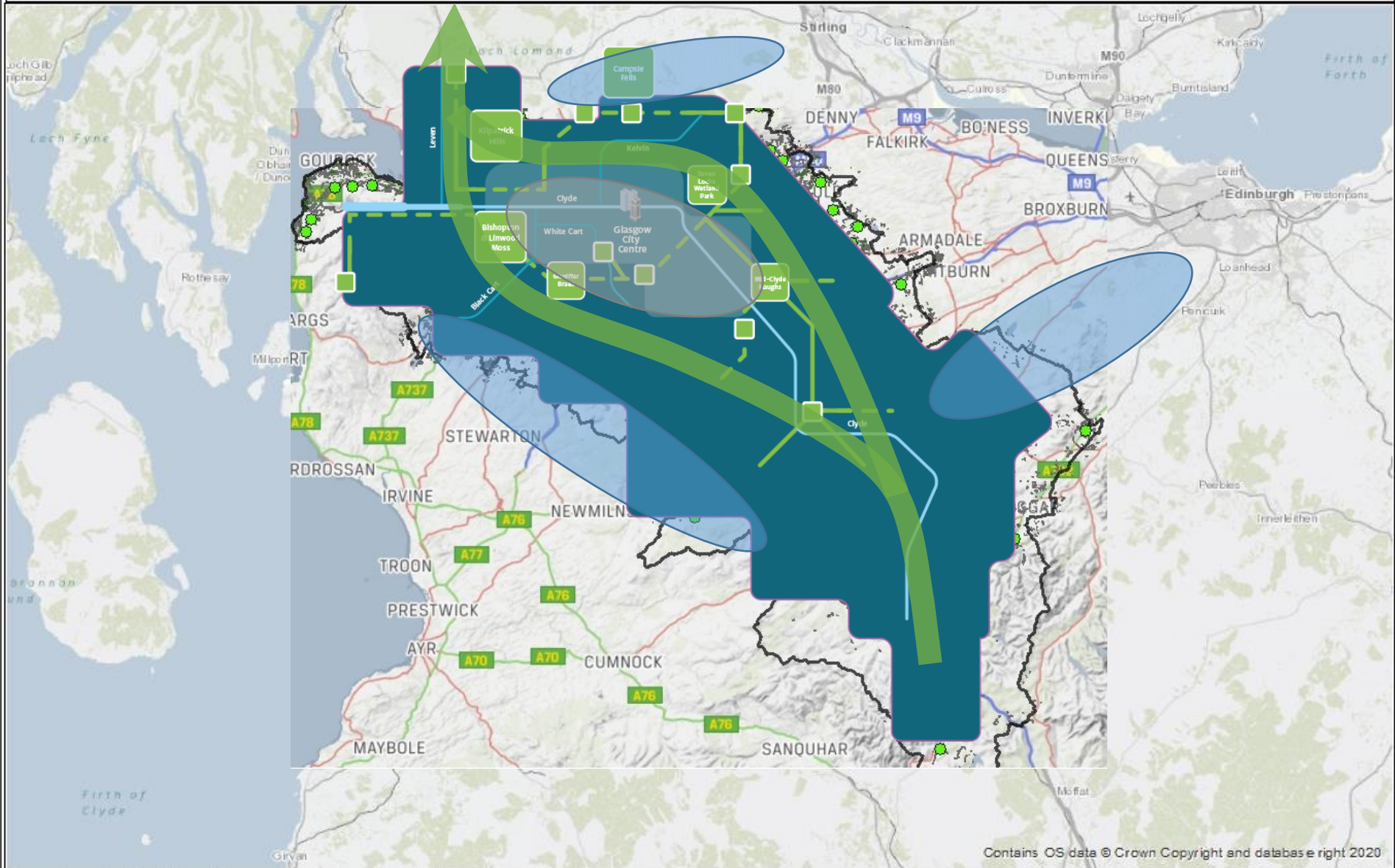


Access
Network

2021



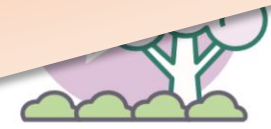
GCV Green Network Partnership



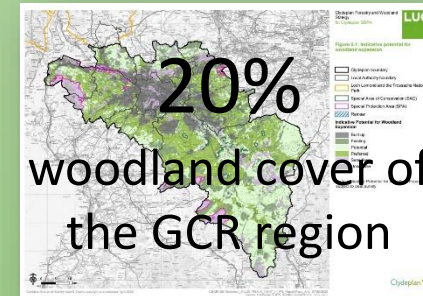
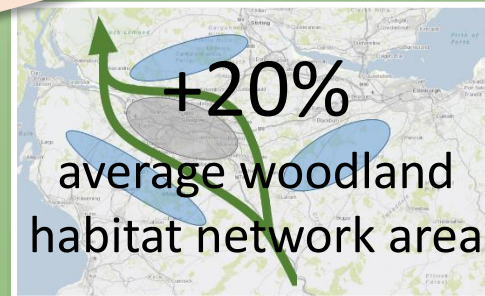
This map is reproduced from Ordnance Survey material with the permission of Ordnance Survey on behalf of the Controller of Her Majesty's Stationery Office © Crown Copyright. Unauthorised reproduction infringes Crown copyright and may lead to prosecution or civil proceedings. Glasgow & The Clyde Valley Strategic Development Planning Authority 100032510 2020.



Learning point:
Packaging the natural network
with other 'sexier' outputs
can make it 'easier to sell'!



Carbon



Green Network

The Blueprint Making the Connections

Thanks for Listening!

max.hislop@gcvgreennetwork.gov.uk

www.gcvgreennetwork.gov.uk

Strategic

Habitat Network

