

Innovative Urban Planning in Copenhagen

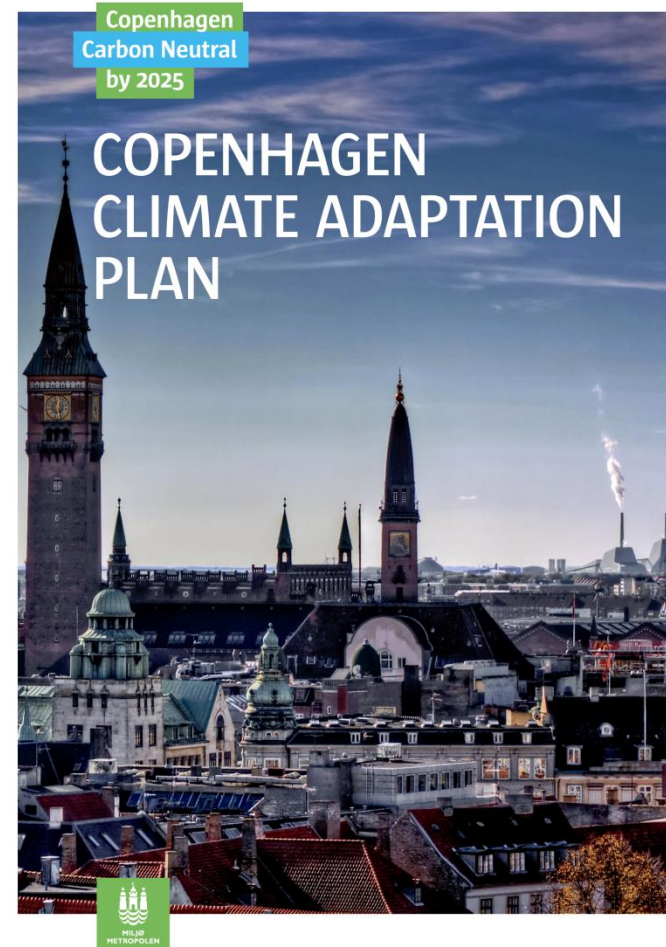


**COPENHAGEN
TOGETHER**

CITY OF COPENHAGEN
The Technical and
Environmental Administration

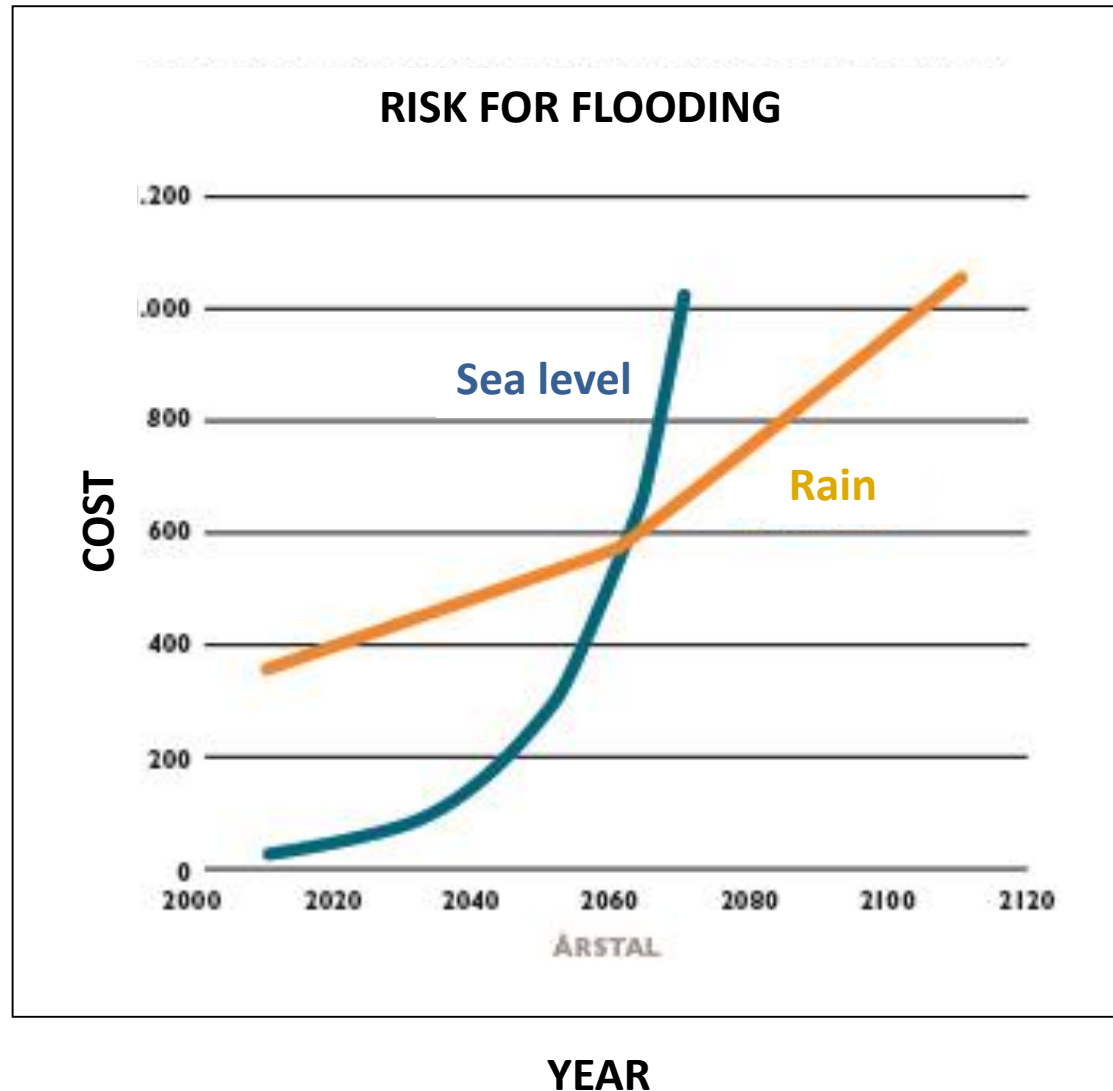
The adaptation plan

- Work started in 2009
- Plan finally approved by City Council in August 2011
- Risk assesment
- Strategies for action
- An estimated implementation period of 30-50 years
- Focus on opportunities of climate change

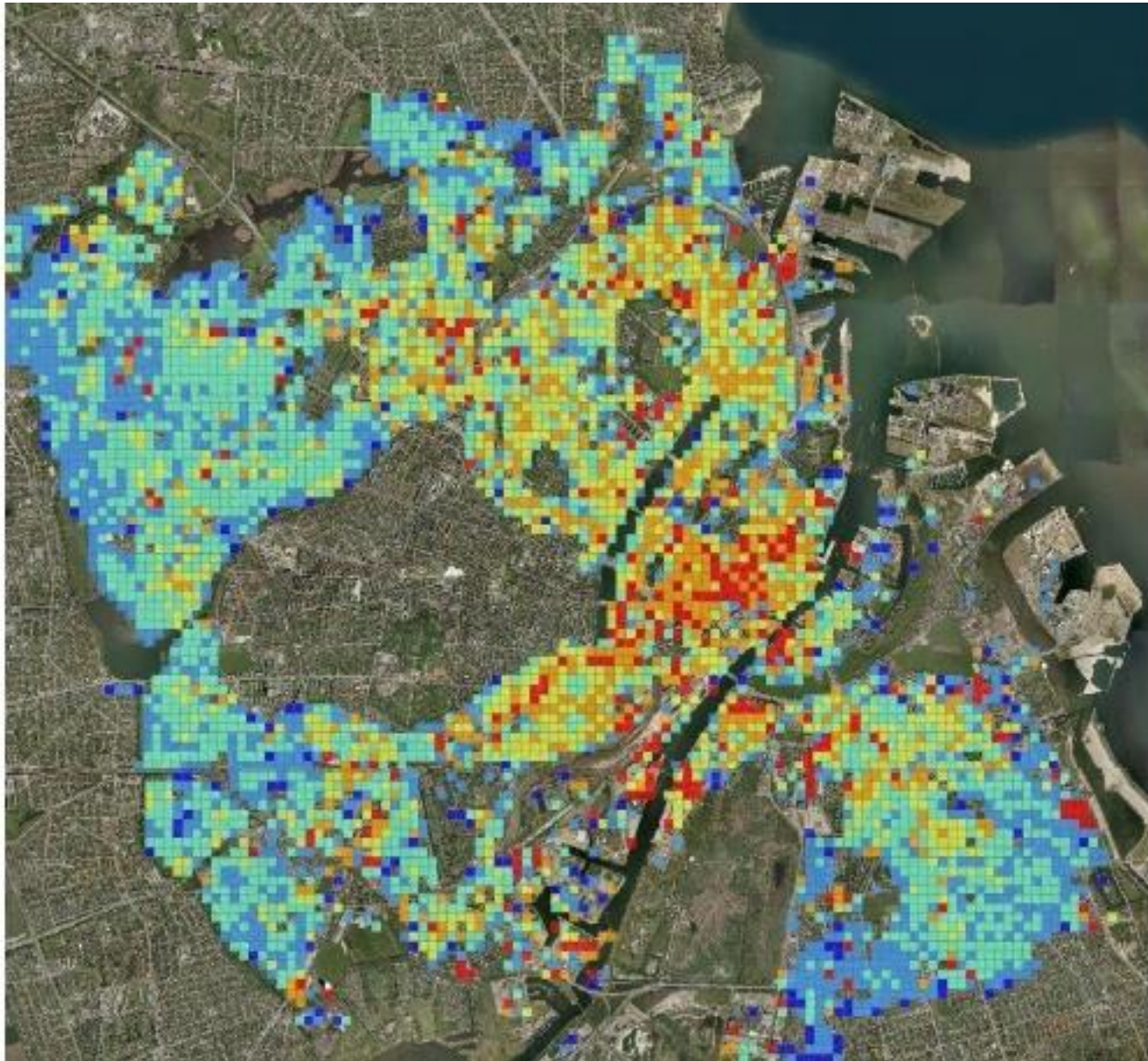


RISK CALCULATION

- Estimated costs and the probability of damage show that rain water is the most immediate threat
- But in 30 years time the risk of flooding due to rising sea levels will be greater (and the damage higher)
- Long decision making process - complicated financing
- Consequences for urban development
- Therefore we must start planning now

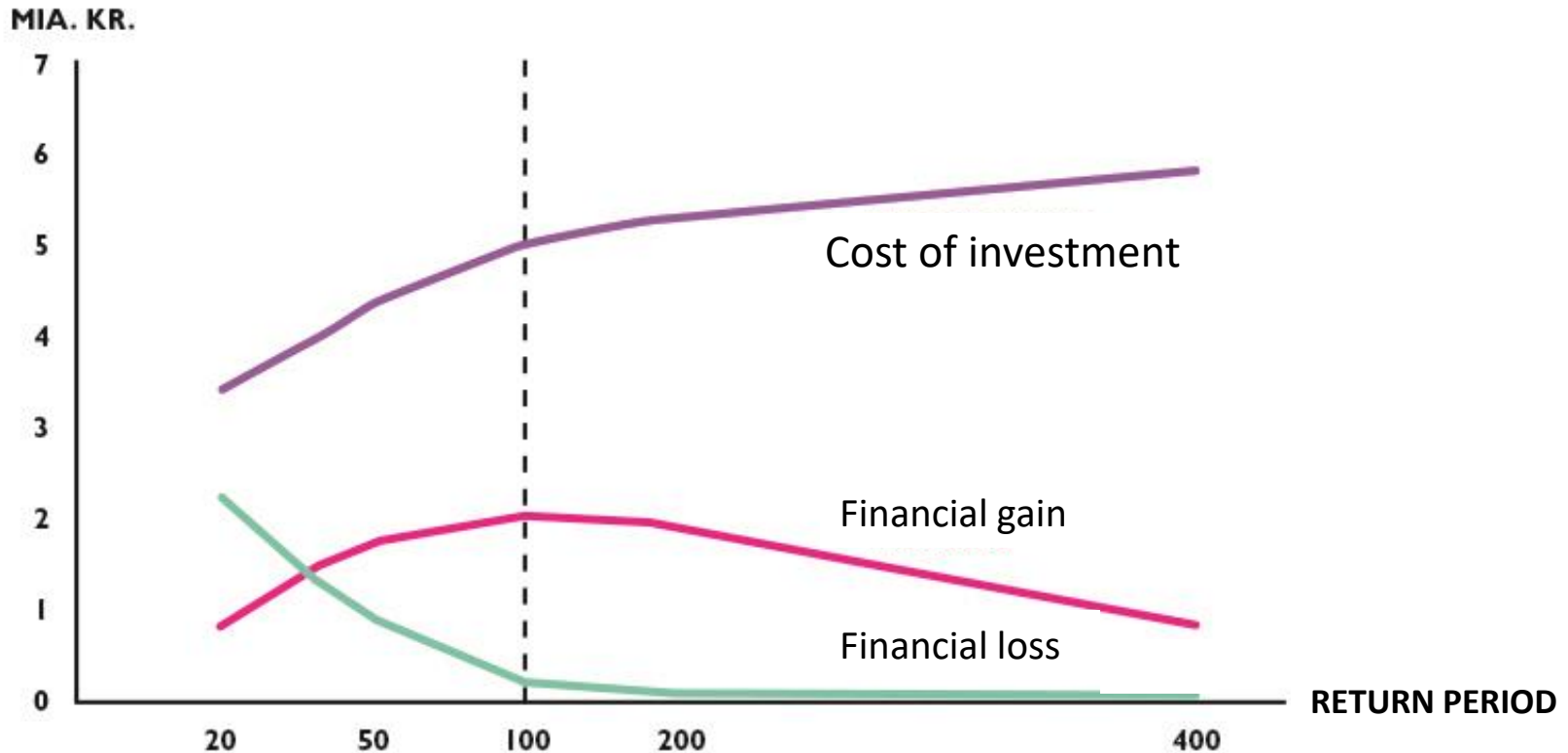


RISK MAP

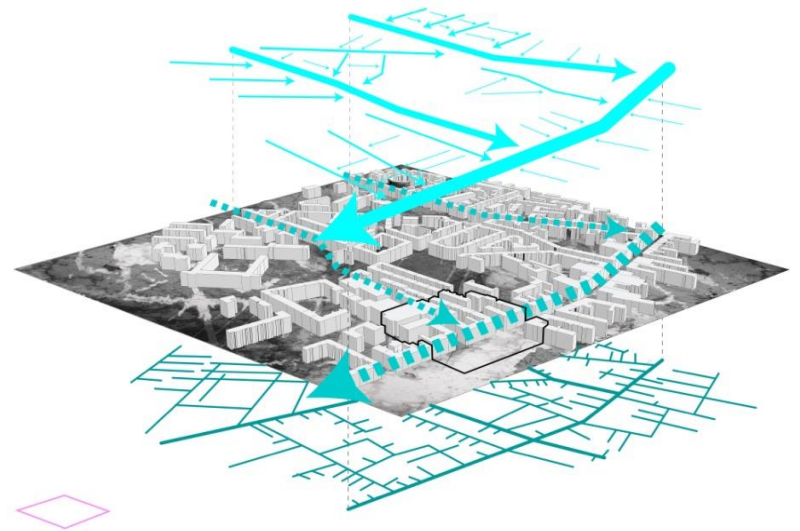
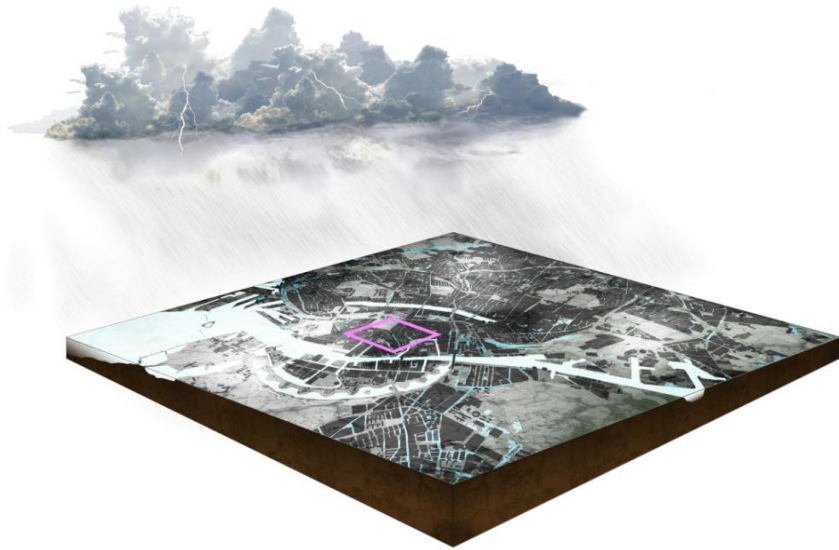




Decision of safety level

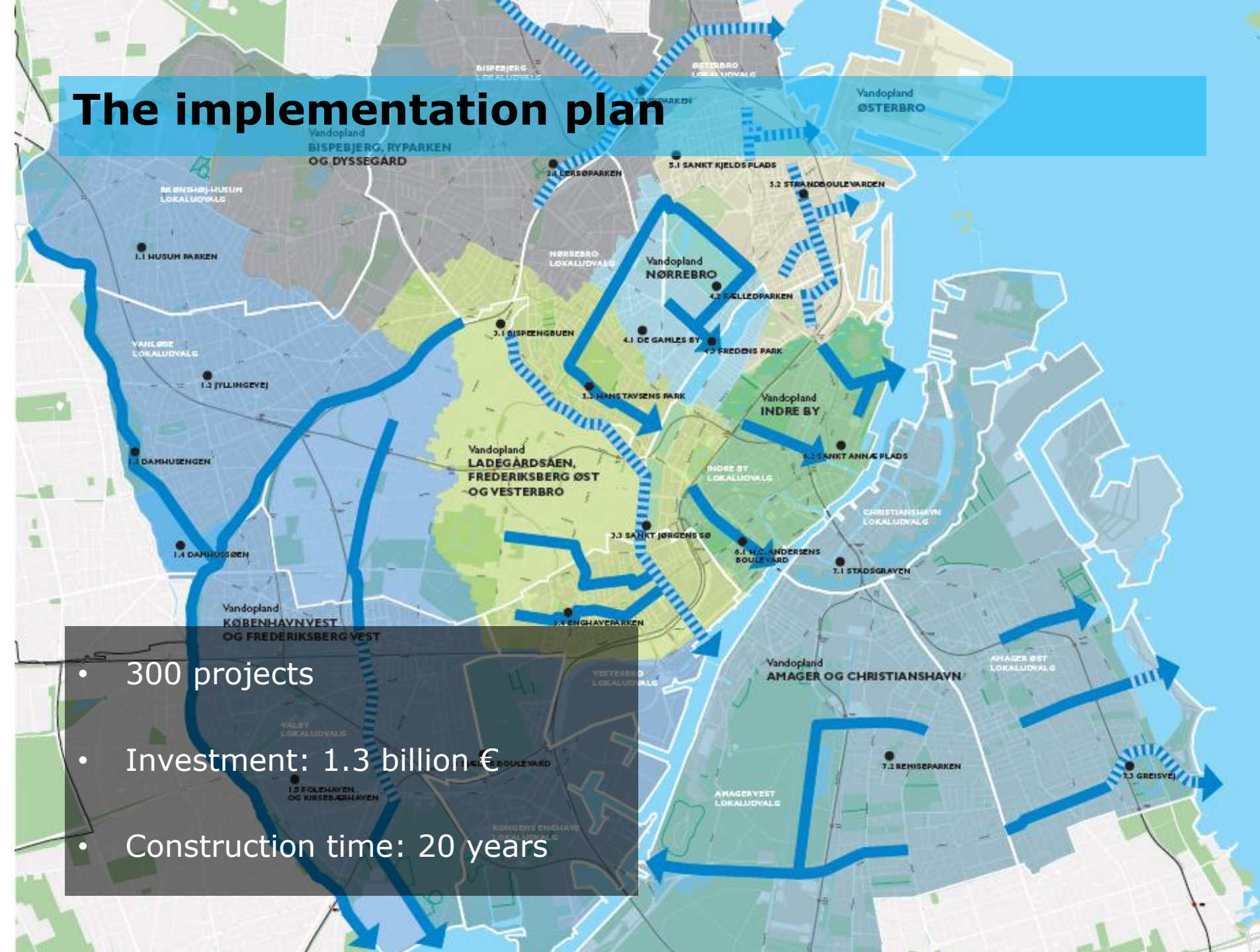


CALCULATING A NEW INFRASTRUCTURE



The implementation plan

- 300 projects
- Investment: 1.3 billion €
- Construction time: 20 years



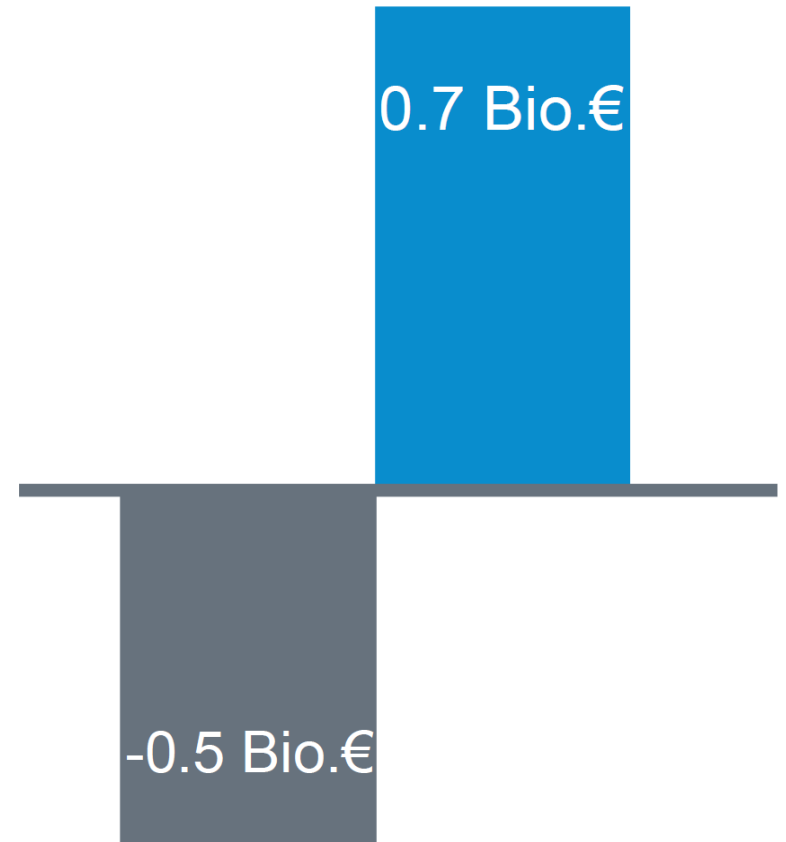
INVESTMENT STATEMENT

- Total costs of new storm water infrastructure – 1.3 billion Euro
- Expanding the existing system would be double the price
- Extra costs for urban improvement (greening etc) 100 mill Euros – or more depending on level of ambition
- Cost benefit analysis still shows that it is a good business case



A good business case

- Total costs: 1.3 billion €
- Robust socio-economic figures
- Cheaper than traditional solutions
- Less flooding = less damage
- Lower insurance costs
- Higher house prices



A green and blue city- adapted to a future climate = more quality of life

- **Adaptation is not just a negative measure**
- **We can increase the recreational area and create more quality of life for copenhageners**
- **We can help make copenhageners more healthy**
- **We can increase biodiversity and create synergy with other planning**



THANK YOU FOR YOUR ATTENTION

