

“To plant a garden is to believe in tomorrow”

- Audrey Hepburn



Mission

To reconnect people with nature





Introducing...

PlantBox

THE CLEVERLY SIMPLE
VERTICAL GARDEN

AT LAST... A LIVING WALL
SYSTEM THAT DOESN'T
COST THE EARTH!

- Transform any vertical space instantly!
- Modular and stackable to suit any garden design
- Freestanding or wall mounted
- An innovative alternative to trellis, fencing or hedging
- So quick and easy to install
- Really simple hoseslock irrigation kit available
- Suited to a wide range of plants (1 ltr ideal)
- UK manufactured from 100% recycled materials
- £1 from every trough purchased donated to charity

Find out more... Come and join the Growing Revolution!™

Contact us now for more
information on how to grow up 😊

01243 957109
plantbox@growingrevolution.com
www.growingrevolution.com/trade

Ask us
for a
free
sample

 **Growing Revolution**
A Planet Biotechure Company







COVID-19 Improves Air Quality in Just Three Months

Weekly average concentration of NO₂ in the air in selected cities (Feb-Apr 2020)*



Central locations

* 95 percent of NO₂ in the air is caused by fossil fuel combustion

Source: World Air Quality Index (WAQI)







WHY LEAVE THAT HAS SUCH PROFESSIONAL SPORTS TEAM AND ALSO THE METS?

PARK FAST

THE GREAT WALL OF CHINA
Museum of Modern Art
2019-2020



Green Roofs & Podium Slabs









Pocket Parks & Linear Parks



New York (June 15, 2006)

<http://www.globalphotos.org>

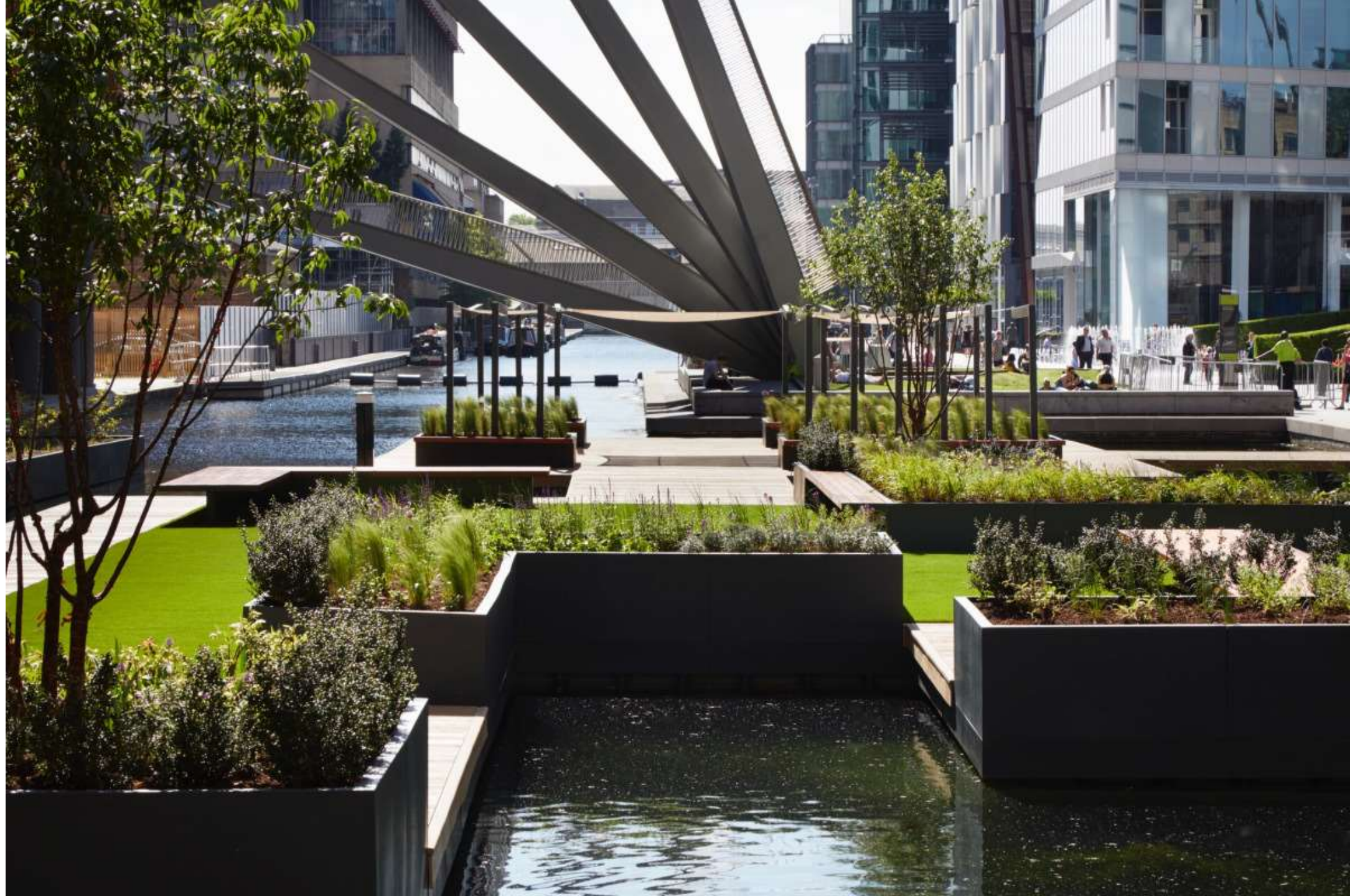


Image Credit:
Jack Hobhouse



Vertical Greening







APOTHEKE

CHIRURGEN

NG Immobilien

STILYAN

Interior Greening







Barriers

1. Cost



Placemaking



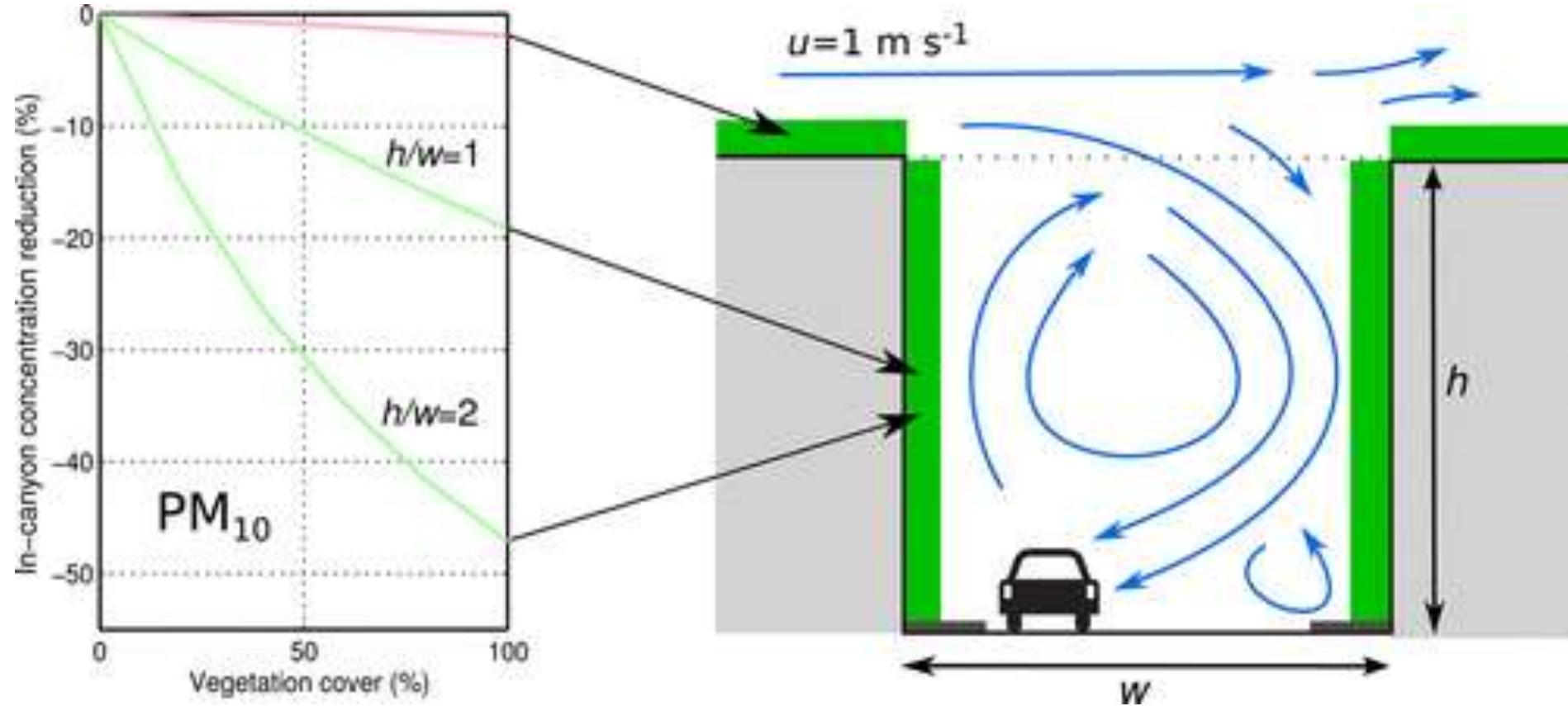




Reducing air pollution



Greening urban street canyons



Effectiveness of Green Infrastructure for Improvement of Air Quality in Urban Street Canyons – Pugh, MacKenzie, Whyatt and Hewitt, Environmental Science & Technology, 2012



“Delivering cleaner air for London is a top priority for me; this ingenious green wall traps harmful pollution on one of our busiest roads, helping to cleanse the air at this popular spot, as well as helping to soften and beautify the local environment”
– *Boris Johnson, Mayor of London, 2012*

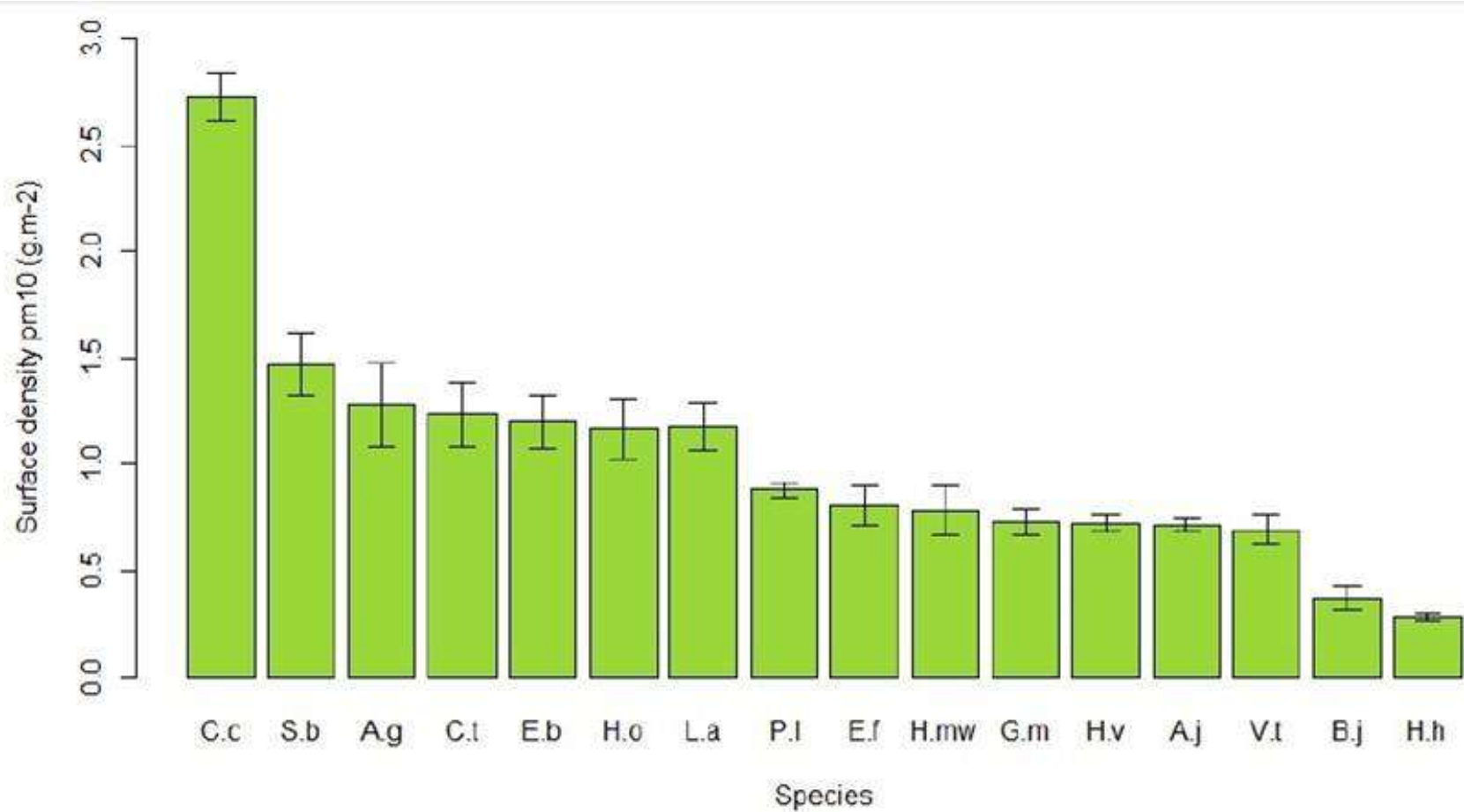


Figure 1: Mean surface density of PM₁₀ capture across each plant species (± 1 standard

error) - C.c = *Convolvulus cneorum*, S.b = *Stachys byzantina*, Ag = *Acorus Gramineus*, C.t = *Carex testacea*, E.b =

Erysimum bicolor, H.o = *Hebe odora*, L.a = *Lavandula angustifolia*, P.l = *Prunus laurocerasus*, E.f = *Euonymus fortune*, H.mw = *Hebe*

'Mrs Winder', G.m = *Geranium maculatum*, H.v = *Heuchera villosa*, A.j = *Aucuba japonica*, V.t = *Viburnum tinus*, B.j =

Berberis julianae, H.h = *Hedera helix*.



Enhancing Productivity and Creativity



Improving Workplace Experience



Promoting Health & Wellbeing



Green infrastructure ADDS value

Remove up to 60% of particulate matter intercepted with the right plant selection (textured leaves etc) - “Effectiveness of green infrastructure for improvement of air quality in urban street canyons” (Pugh, MacKenzie, Whyatt, Hewitt, 2012)

Reduce local urban temperatures by 3 to 5 degrees Celsius. “Urban Green Infrastructure should be an important component of any urban climate change adaptation strategy” (Norton et al. 2014)

Provide thermal benefits to buildings – “up to 9°C cooler in summer / 4°C warmer in winter” (Vox, Blanco, Schettini, 2016)

Improve biodiversity by creating green corridors and forming part of a network of green spaces particularly with the inclusion of invertebrate habitat boxes – “Green walls have proven benefits for biodiversity” (Collins, Schaafsma, Hudson, 2017)

Attenuate Rain water when incorporated with a rainwater harvesting system. Attenuation is as significant as the size of the attenuation tank

Reduce noise – Biotope living wall confirmed to be a class ‘C’ acoustic material

Visual enrichment of environment “to enhance comfort, satisfaction, well-being and performance” (Kellert et al, 2008)

Improve sense of well-being – “being surrounded by a more natural environment helps us to connect with nature and reinforces the value of respect and care for the environment” (Heerwagen, 2009)

Barriers

1. Cost
2. Compliance



Compliance

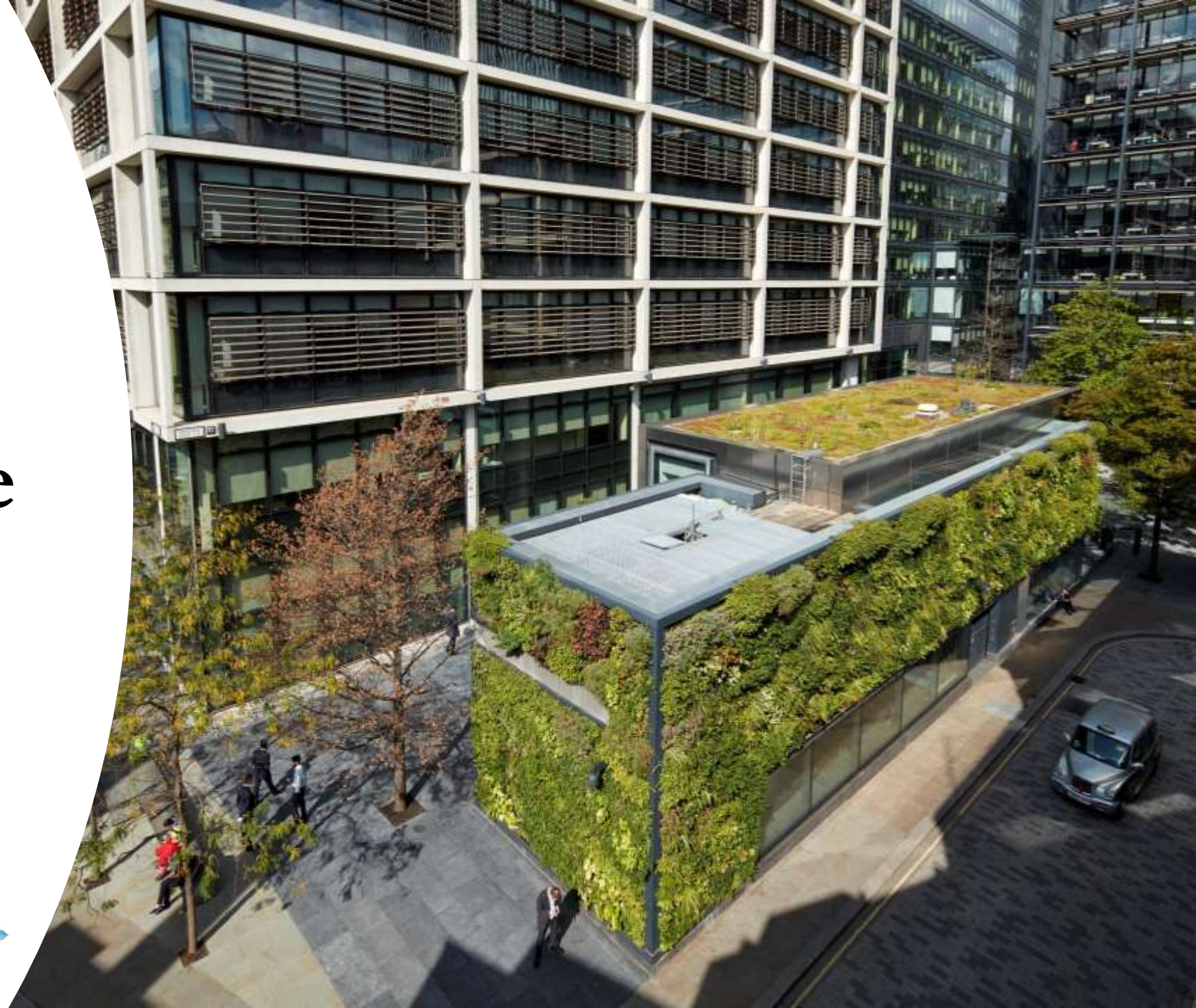


Barriers

1. Cost
2. Compliance
3. Confusion



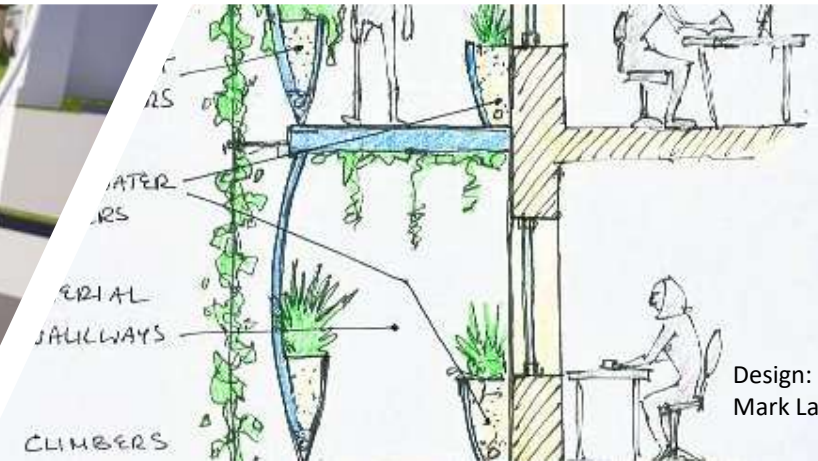
Green Infrastructure Consultancy





Building Bio-Membranes

Designing cooler structures



Design:
Mark Laurence



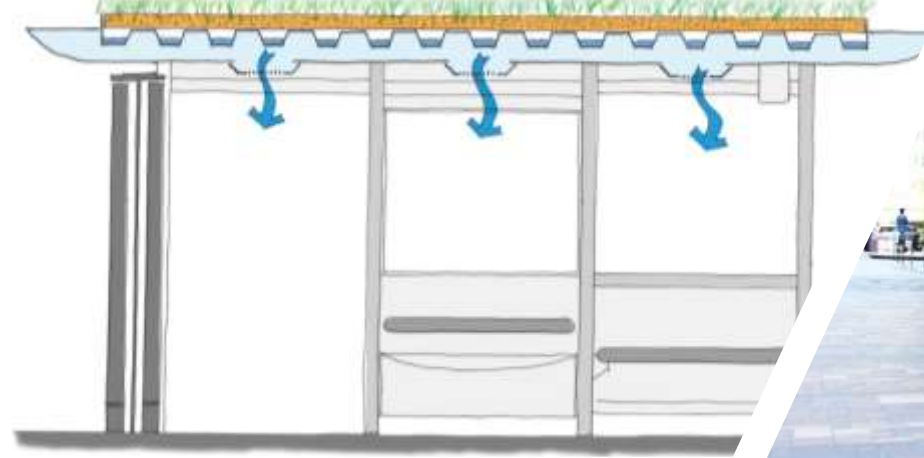
Placemaking & Wayfinding

Reconnecting people with nature





Vincent
Callebaut



Active Airflow Living Walls & Roofs

Creating clean air zones ...naturally

biotecture 





Biology & Technology

Urban landscapes fit for the future

biotecture 

