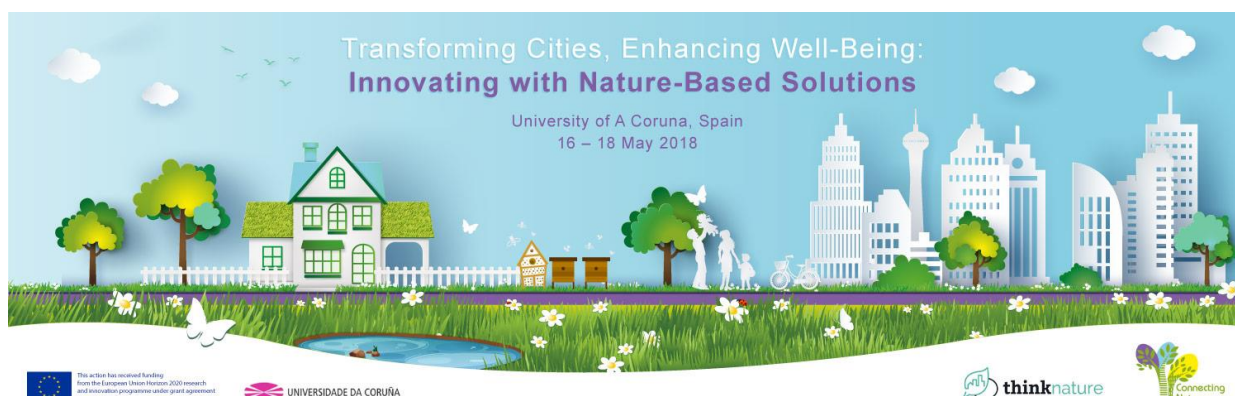


HORIZON2020

European Dialogue and Clustering Action

**TRANSFORMING CITIES, ENHANCING
WELLBEING: INNOVATING WITH NATURE-
BASED SOLUTIONS**

University of A Coruna (Spain), 16-18 May 2018



practical information

TRAVELLING AND ACOMMODATION

VENUE

FUNDACIÓN BARRIÉ, A CORUÑA



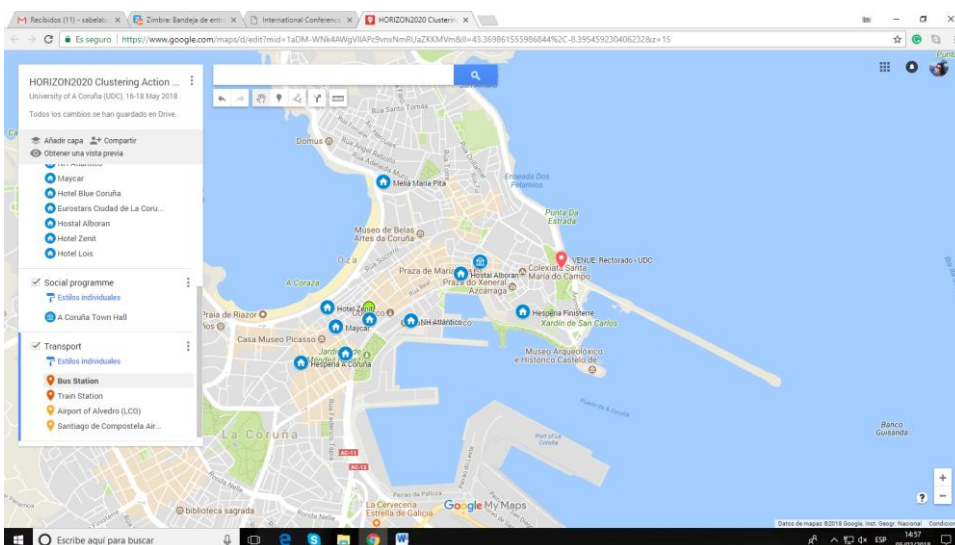
Location: Cantón Grande, 9, A Coruña. [Map](#)

City buses stopping nearby the venue: 1, 1-A, 2-A, 3-A, 5, 17, 23, 23-A

The Barrié Foundation is at the city centre. The venue is at walking distance from all the hotels there or reachable by bus if you stay away from the center.

PLAN YOUR ROUTE BY BUS IN: [HTTP://WWW.TRANVIASCORUNA.COM/EN/](http://www.tranviascoruna.com/en/)

[EVENT LOCATION MAP](#)



<https://www.google.com/maps>

RECOMMENDED ACCOMODATION

Hesperia Finisterre (5*)



Meliá María Pita (4*)



Hotel Blue Coruña (4*)



NH Atlántico (4*)



Hotel Eurostars Ciudad de la Coruña (4*)



Hotel Zenit (4*)



Hotel Riazor (3*)



Hostal Alborán (3*)



Please check the [event location map](#) to see more hotels and to see distances to the venue.

ARRIVING A CORUÑA

Transport

Air

The [Airport of Alvedro](#) (LCG) is just half an hour from the city centre by bus, which has a regular service. There are direct, scheduled flights from and to London, Lisbon, Madrid, Valencia, Seville and Barcelona.

Additionally, many airlines fly to [Santiago de Compostela Airport](#) (SCQ) which is located less than an hour away from A Coruña. Connections by [bus](#) are available from SQC airport. [Fast connections by train](#) are available from the Santiago de Compostela rail station to A Coruña.

Rail

The [train station](#) is just ten minutes drive from the city centre, with frequent bus service and taxi.

For all the information on the rail network visit: www.renfe.com

Bus

A Coruña bus station is almost at the city centre. There is a wide range of companies, which provide bus connections with other areas. For information about the available routes call +34 981 184 335 or visit the webpage [Tranvías Coruña](#).

Useful information

Time zone

Spain time Central European Standard Time is 1 hour ahead of Greenwich Mean Time (GMT+1).

Climate

This area is frequently known as the green Spain as a result of its temperate climate and elevated rain fall. The north of Spain has an average rain fall comparable with that found in the UK and France and four distinct seasons, although you must always carry an umbrella with you. The reason of this temperate climate are the hundreds of kilometers of coastline.

Currency

Currency exchange: Foreign banknotes and traveler's check can be exchanged at foreign exchange banks and other authorized moneychangers.

Credit cards

Visa, Visa Electron, American Express and Master Card are widely accepted at major services in the larger cities. The best option is to choose a credit card provider who does not charge commission on overseas transactions and uses the current bank rate.